



DON'T MUCK! WITH a TRUCK

Driving safely around trucks

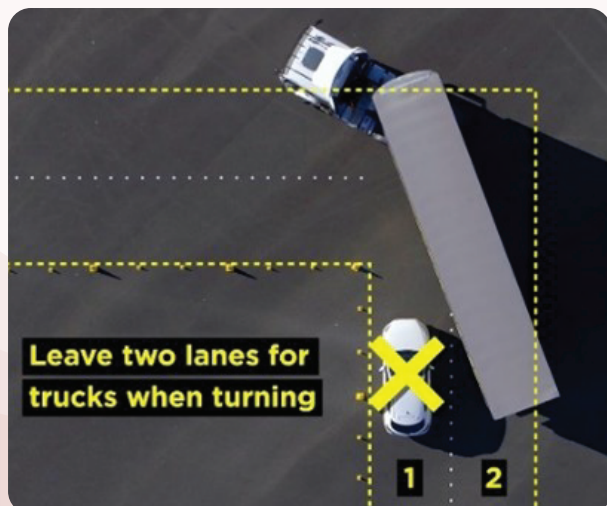
Whether you're a new P plater or have been driving for many years, lots of us aren't used to driving around road trains. So, we've come up with a few tips to keep everyone safe when encountering road trains, whether it's in town or out on the highway.

Turning

Road trains often need to take up more than one lane to turn at corners and roundabouts. This can turn into a dangerous situation if other drivers aren't providing enough space. A truck driver might not be able to see you next to them and you could collide with a truck as it turns.

Top Tip 1

Don't drive past, overtake or undertake a turning road train!

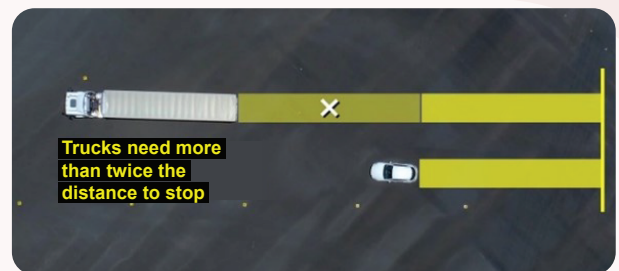


Stopping

Road trains take a lot longer to slow down and stop than cars. If truck drivers need to brake hard behind you, you may cause them to swerve, lose control or crash.

Top Tip 2

When pulling in front of a road train, give them 3 to 4 times more space than you would a car!



Overtaking

It can be frustrating to be "stuck" behind a truck, but being patient could save a life! If you have a UHF radio, you can call up the driver on Channel 40.

Top Tip 3

Wait for a long stretch of highway where you have a clear view ahead, then indicate and overtake quickly to reduce the time you're in a road train's blind spot. Only pull back in when you can see a road train's headlights in your rear view mirror.





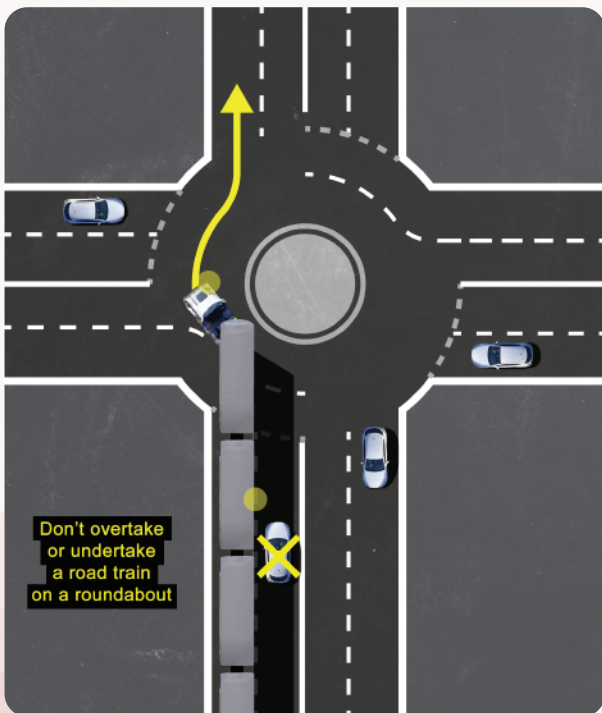
**DON'T
MUCK!
WITH a
TRUCK**

Roundabouts

Broome has so many roundabouts that we thought it was worth a dedicated tip! Whilst our PBS 60m quad road train trailers follow each other exceptionally well, not all trucks are the same and sometimes take up two lanes on a roundabout.

Top Tip 4

Don't overtake or undertake a road train on a roundabout.



Speed Limits

Did you know our PBS 60m road trains are limited to below sign posted speeds in different parts of town?

90

Km/Hr

Great Northern Highway
 Between the Thunderbird turn off and
 Roebuck Roadhouse

40

Km/Hr

**Broome Road/
Gubinge Road**
 Between Tanami Drive and
 Magabala Road intersections

60

Km/Hr

Gubinge Road
 Between Magabala Road and
 Gantheaume Point Road intersections

Don't Muck With a Truck was created by the National Heavy Vehicle Regulator (NHVR) to improve young drivers' awareness and education of how to drive safely around trucks. The information contained in this document is in good faith, however neither KMS nor any of its directors, employees or contractors give any warranty of accuracy nor accepts any liability as a result of reliance upon the information, advice, statement or opinion contained in this document. This disclaimer is subject to any contrary legislative provisions. Document development and design by Harby Studios.